

Overall figures of immigrants in European society

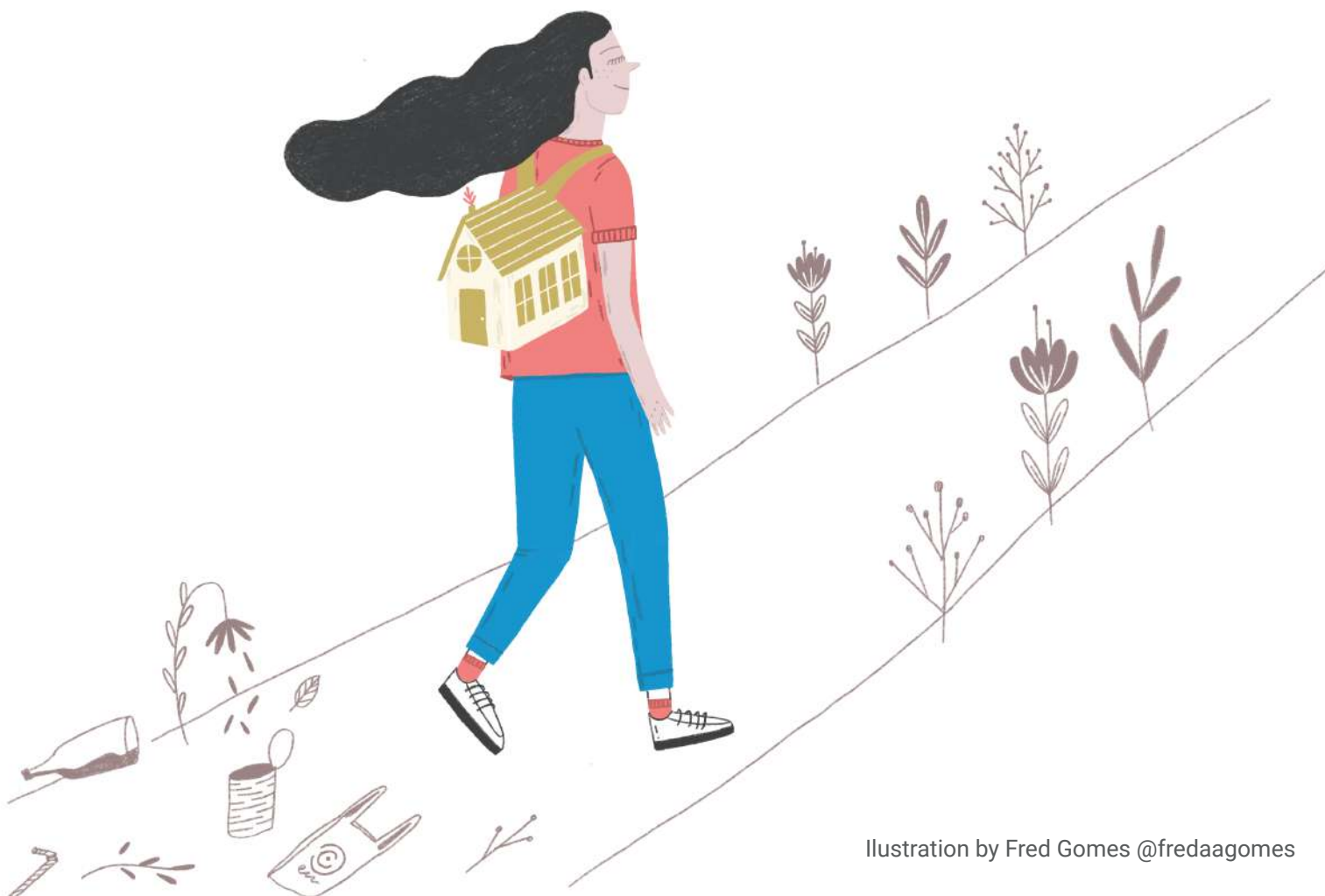
On 1 January 2019, there were 446.8 million inhabitants living in the EU

[know more](#)

20.9 million were non-EU citizens (4.7% of EU's total population)

34.2 million people were born outside the EU* (7.7% of all EU inhabitants)

*This does not include those born in another Member State



PARTNERS' MEETING

The partners meeting focused on reviewing the TAS activities, with a clearly positive balance, despite the effects felt by the pandemic. The events will continue to be held online, with the possibility of holding the final event in Brussels, in a mixed format.

WORKLABS

By June 2021, all partners will hold the fifth and last WorkLab on Migration, the Synthesis WorkLab. We will close a cycle of work meetings with a group of very participative and activist young people, who had the opportunity to consolidate knowledge about migration in a critical and constructive way. More information about the WorkLabs [here](#).

FACEBOOK

The project's Facebook page has many new features. Each partner is active on a monthly basis, making it very diverse and with various contextualisations of migrations at European level.

WEBINAR

"WE DON'T WANT STRANGERS" - RACISM AND DISCRIMINATION ON MIGRATION

IMVF organized the third International Webinar of the project, with the participation of Juliana Wahlgren, from the European Network Against Racism (ENAR) and Emellin de Oliveira, Researcher at the Centre for R&D in Law and Society (CEDIS). In debate were topics such as the impact of racism and discrimination in the migration process, the impact of new social dynamics in migration and the importance of creating new narratives regarding migration and migrants. More information about the Webinar [here](#).



 **TAS**
Theosis, Antithesis, Synthesis
MIGRATION LABS

WEBINAR

***"We don't want strangers" - Racism
and Discrimination on Migration***

May 21st 2021 | 2.30pm – 4pm (Lisbon Time)

 Co-funded by the Europe for
Citizens Programme of the
European Union

 **IMVF**
Instituto Português de Vale Pôr

WHAT TO READ

ApartTogether

ApartTogether is a global study to assess the public health social impact of the COVID-19 pandemic on refugees and migrants. It is a collaboration between World Health Organization, across its regional offices, the UN System, and a collaboration of research centres led by Ghent University (Belgium) and the University of Copenhagen (Denmark).

[READ](#)



The Securitisation Process that Hinders any Solidarity Approach towards Refugees



The year of 2015 was marked by the unprecedented and astonishing increase in the number of asylum applications at the Mediterranean borders of the European Union (EU). To this situation, the EU rung the alarms and called the Member States to cope on the management of what would be labelled the «refugee crisis».

[READ](#)

Far-right groups shout the loudest on social media



Right-wing populists dominate the political discourse on social media platforms in Europe far more than their voter share would suggest, according to a study by the Spanish data analysis company Alto. The data from Germany, France, Spain, Italy and Poland – and exclusive to “Investigate Europe” – show that small parties succeed in attracting attention on Facebook or Twitter by systematically using the mechanisms of these platforms.

[READ](#)

WHAT TO WATCH

#4 Life Stories | Rochele Nunes, the Judoka

"I'm a person who loves to live, I like to live intensely", Rochelle Nunes, 31, Brazilian

Moving to Portugal to practice judo. Missing her family. Overcoming difficult moments. Her positivity and optimism. The joy and intensity of life. Discipline and focus. Judo as a lifestyle.

[WATCH THE VIDEO](#)



The EU's 2021-2027 Action Plan on Integration and Inclusion explained

The European Commission revealed its new Action Plan on Integration and Inclusion to guide EU countries over the 2021-2027 period. What are the main actions and what is new?

[WATCH THE VIDEO](#)



TAS – THESIS, ANTITHESIS AND SYNTHESIS - MIGRATION LABS

The TAS – Migration Labs aims to support the fundamental principles of EU citizenship and to promote an improvement in civic and democratic participation at EU level, reaffirming values of solidarity, intercultural dialogue, mutual understanding and combatting existing stereotypes on migration and minorities. Our activities are mostly directed at young adults, political decision makers and other stakeholders from partner countries. The tasks envisage to raise awareness of EU policy-making processes, in particular migration, and to boost opportunities for social and intercultural participation and volunteering.

LEARN MORE ABOUT THE PROJECT: tasmigrationlab.eu
FOLLOW US ON [FACEBOOK](#) AND [TWITTER](#)

PROJECT PARTNERS:

[ACTA Center](#) (Romania) | [Cooperazione Paesi Emergenti](#) (Italy) | [Instituto Marquês de Valle Flôr](#) (Portugal) | [Terraforming](#) (Serbia) | [Vocal Europe](#) (Belgium)

The European Commission's support for the production of this publication does not constitute an endorsement of its content, which reflects the authors' point of view only. The Commission cannot be held responsible for any use which may be made of the information contained therein.